



Solenoid valve 2/2 way N.C. With piston pilot control

21YW4K0T130

÷

21YW6K0T250

PRESENTATION:

S.V. with pilot control for interception of fluids compatible with the construction materials.

A minimum operational pressure of 0,9 bar is required.

The materials used and the tests carried out ensure maximum reliability and duration.

USE: Hot water, Steam

PIPES: G 1/2 - G 1

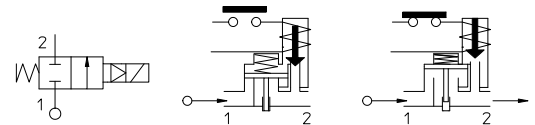
COILS: 8W - Ø 13
BDF - BDV 180°C (class H)

MOULDING AND BOBBIN ARE MADE BY 100% VIRGIN MATERIAL.

Max. allowable pressure (PS) 25 bar
Ambient temperature: - 40°C + 80°C



Gaskets	Temperature		Medium
T=PTFE (polytetrafluorethylen)	- 40°C	+180°C	Steam, hot water



Pipe ISO 228/1	Code	Max viscosity		Ø mm	Kv l/mn	Power (watt)	Pressure		
		cSt	°E				min bar	M.O.P.D. AC bar DC bar	
G 1/2	21YW4K0T130	-	-	13	50	8	0,9	10	10
G 3/4	21YW5K0T190			19	90				
G 1	21YW6K0T250			25	160				

The "ODE" reserves the right to carry out technical and aesthetic modifications without prior notification.

MATERIALS:

Body	Brass - UNI EN 12165 CW617N
Armature tube	Stainless steel AISI series 300
Fixed core	Stainless steel AISI series 400
Plunger	Stainless steel AISI series 400
Phase displacement ring	Copper - Cu 99,9%
Spring	Stainless steel AISI series 300
Piston seal	Modified PTFE
Main seal	Glassfiber reinforced T=PTFE
Pilot seal	PTFE
Orifice	Brass - UNI EN 12165 CW617N

On request:

Connector	Pg 9 o Pg 11
Connector conformity	ISO 4400

FEATURES:

Electrical conformity	IEC 335
Protection degree	IP 65 EN 60529 (DIN 40050) with coil fitted by connector.

SPARE PARTS:

1. Coil:	See coils list	6. Complete piston:	G 1/2 Code R452604
2. Complete plunger:	Code R450897	G 3/4 Code R452547	G 1 Code R452548
3. Complete armature tube:	Code R450606	7. Gasket plug:	G 1/2 Code R452609
4. Sealing ring:	G 1/2 Code R452607	G 3/4+G 1 Code R452553	
	G 3/4 Code R452551		
	G 1 Code R452552		
5. Gasket cover:	G 1/2 Code R452608		
	G 3/4+G 1 Code R450858		

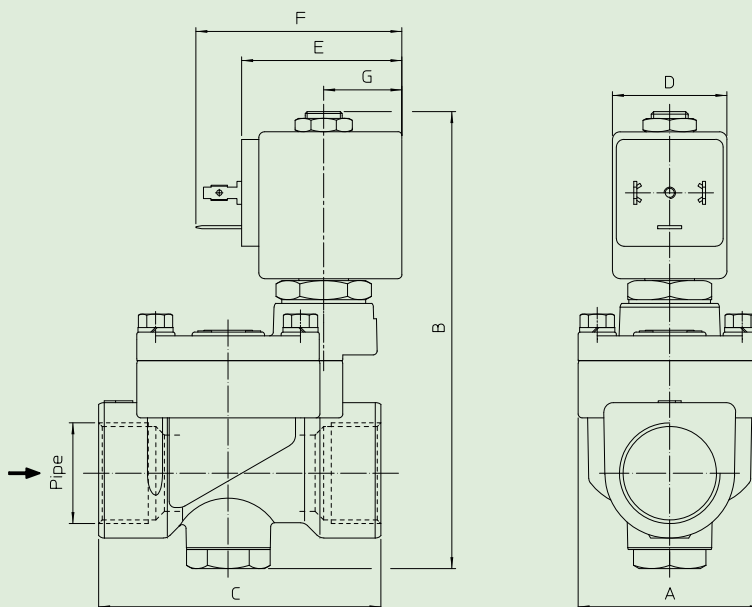
KIT:

KT130K730-AGP=2+3

MAINTENANCE KIT:

G 1/2 KTPYW4K0713=2+4+5+6+7
G 3/4 KTPYW5K0719=2+4+5+6+7
G 1 KTPYW6K0725=2+4+5+6+7

DIMENSIONS:



Type	Pipe ISO 228/1	A mm	B mm	C mm
21YW4K07130	G 1/2	40	107	65
21YW5K07190	G 3/4	48	120	74
21YW6K07250	G 1	62	130	93

COIL TYPE	POWER ABSORPTION	DIMENSIONS			
	W ==	D mm	E mm	F mm	G mm
B	8	30	42	54	20,5



Solenoid valve 2/2 way N.C. With piston pilot control

21YN4K0T130-YW

÷

21YN6K0T250-YW

PRESENTATION:

S.V. with pilot control for interception of fluids compatible with the construction materials.

A minimum operational pressure of 0,9 bar is required.

The materials used and the tests carried out ensure maximum reliability and duration.

USE: Hot water, Steam

PIPES: 1/2 NPT - 1 NPT

COIL: 8W - Ø 13
BDF - BDV 180°C (class H)

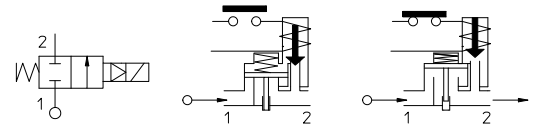
MOULDING AND BOBBIN ARE MADE BY 100% VIRGIN MATERIAL.

Max. allowable pressure (PS) 25 bar
Temperature ambiante: - 40°C + 80°C



Special item-not standard

Gaskets	Temperature		Medium
	- 40°C	+180°C	
T=PTFE (polytetrafluorethylen)			Steam, hot water



Pipe ANSI/ASME BI.20.1	Code	Max viscosity		Ø mm	Kv l/mn	Power (watt)	Pressure		
		cSt	°E				min bar	M.O.P.D.	
								AC bar	DC bar
1/2 NPT	21YN4K0T130-YW	-	-	13	50	8	0,9	10	10
3/4 NPT	21YN5K0T190-YW			19	90				
1 NPT	21YN6K0T250-YW			25	160				

Note.

Available on request and with minimum quantities.

The "ODE" reserves the right to carry out technical and aesthetic modifications without prior notification.

MATERIALS:

Body	Brass - UNI EN 12165 CW617N
Armature tube	Stainless steel AISI series 300
Fixed core	Stainless steel AISI series 400
Plunger	Stainless steel AISI series 400
Phase displacement ring	Copper - Cu 99,9%
Spring	Stainless steel AISI series 300
Piston seal	Modified PTFE
Main seal	Glassfiber reinforced T=PTFE
Pilot seal	PTFE
Orifice	Brass - UNI EN 12165 CW617N

On request:

Connector	Pg 9 o Pg 11
Connector conformity	ISO 4400

FEATURES:

Electrical conformity	IEC 335
Protection degree	IP 65 EN 60529 (DIN 40050) with coil fitted by connector.

SPARE PARTS:

1. Coil:	3/4 NPT	Code R452547	
See coils list	1 NPT	Code R452548	
2. Complete plunger:		7. Gasket plug:	
Code R450897		1/2 NPT	Code R452609
3. Complete armature tube:	3/4÷ 1 NPT	Code R452553	
Code R450606			
4. Sealing ring:			
1/2 NPT	Code R452607		
3/4 NPT	Code R452551		
1 NPT	Code R452552		
5. Gasket cover:			
1/2 NPT	Code R452608		
3/4÷ 1 NPT	Code R450858		
6. Complete piston:			
1/2 NPT	Code R452604		

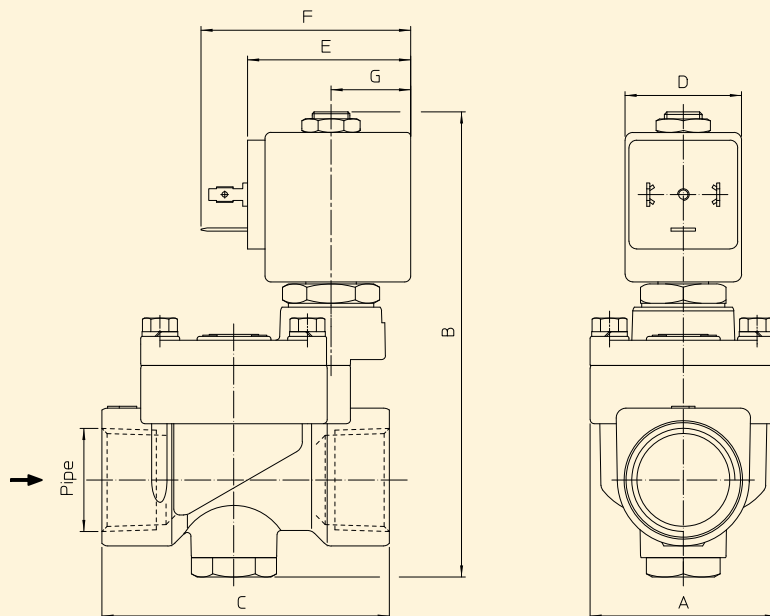
KIT:

KT130KT30-AGP=**2+3**

MAINTENANCE KIT:

1/2NPTKTPYW4K0T13= 2+4+5+6+7
3/4NPTKTPYW5K0T19= 2+4+5+6+7
1 NPT KTPYW6K0T25= 2+4+5+6+7

DIMENSIONS:



Type	Pipe	A mm	B mm	C mm
21YN4K0T130-YW	1/2 NPT	40	107	65
21YN5K0T190-YW	3/4 NPT	48	120	74
21YN6K0T250-YW	1 NPT	62	130	93

COIL TYPE	POWER ABSORPTION	DIMENSIONS			
	W	D mm	E mm	F mm	G mm
B	8	30	42	54	20,5



Solenoid valve 2/2 way N.O. With piston pilot control

21YW4Z0T130

÷

21YW6Z0T250

PRESENTATION:

S.V. with pilot control for interception of fluids compatible with the construction materials.

A minimum operational pressure of 0,9 bar is required.

The materials used and the tests carried out ensure maximum reliability and duration.

USE: Hot water, Steam

PIPES: G 1/2 - G 1

COIL: 8W - Ø 13
BDF - BDV 180°C (class H)

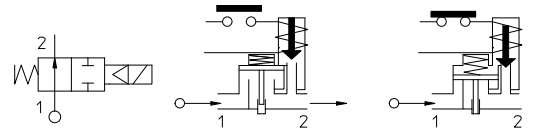
MOULDING AND BOBBIN ARE MADE BY 100% VIRGIN MATERIAL.

Max. allowable pressure (PS) 25 bar
Temperature ambiante: - 40°C + 80°C



Special item-not standard

Gaskets	Temperature		Medium
T=PTFE (polytetrafluorethylen)	- 40°C	+180°C	Steam, hot water



Pipe ISO 228/1	Code	Max viscosity		Ø mm	Kv l/mn	Power (watt)	Pressure		
		cSt	°E				min bar	M.O.P.D. AC bar DC bar	
G 1/2	21YW4Z0T130	-	-	13	50	8	0,9	10	10
G 3/4	21YW5Z0T190			19	90				
G 1	21YW6Z0T250			25	160				

Note.

Available on request and with minimum quantities.

The "ODE" reserves the right to carry out technical and aesthetic modifications without prior notification.

MATERIALS:

Body	Brass - UNI EN 12165 CW617N
Armature tube	Stainless steel AISI series 300
Fixed core	Stainless steel AISI series 400
Plunger	Stainless steel AISI series 400
Phase displacement ring	Copper - Cu 99,9%
Spring	Stainless steel AISI series 300
Piston seal	Modified PTFE
Main seal	Glassfiber reinforced T=PTFE
Pilot seal	PTFE
Orifice	Brass - UNI EN 12165 CW617N

On request:

Connector	Pg 9 o Pg 11
Connector conformity	ISO 4400

FEATURES:

Electrical conformity	IEC 335
Protection degree	IP 65 EN 60529 (DIN 40050) with coil fitted by connector.

SPARE PARTS:

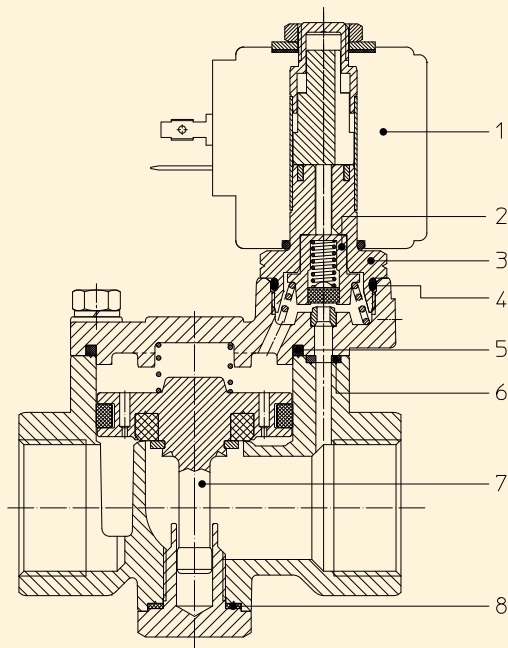
1. Coil: See coils list	G 3/4+G 1 Code R450858
2. Diaphragm support: Code R450790	7. Complete piston: G 1/2 Code R452604 G 3/4 Code R452547 G 1 Code R452548
3. Complete armature tube without gasket: Code R450573	8. Gasket plug: G 1/2 Code R452609 G 3/4+G 1 Code R452553
4. Gasket O-Ring: Code 990000/T	
5. Sealing ring: G 1/2 Code R452607 G 3/4 Code R452551 G 1 Code R452552	
6. Gasket cover: G 1/2 Code R452608	

KIT:

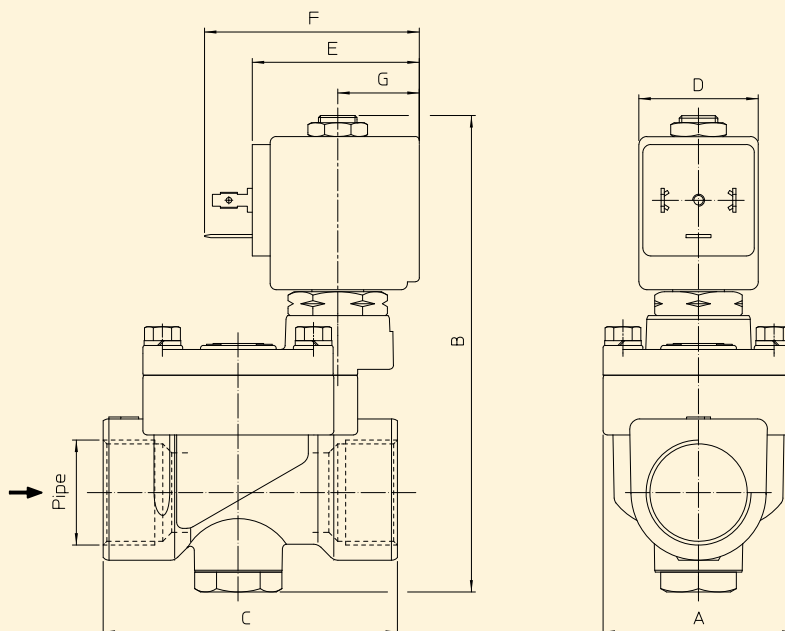
KT130ZT30-TG=2+3+4

MAINTENANCE KIT:

G 1/2	KTPYW4Z0T13=2+5+6+7+8
G 3/4	KTPYW5Z0T19=2+5+6+7+8
G 1	KTPYW6Z0T25=2+5+6+7+8



DIMENSIONS:



Type	Pipe ISO 228/1	A mm	B mm	C mm
21YW4Z0T130	G 1/2	40	107	65
21YW5Z0T190	G 3/4	48	120	74
21YW6Z0T250	G 1	62	130	93

COIL TYPE	POWER ABSORPTION	DIMENSIONS			
	W ==	D mm	E mm	F mm	G mm
B	8	30	42	54	20,5



Solenoid valve 2/2 way N.O. With piston pilot control

21YN4Z0T130-YW

÷

21YN6Z0T250-YW

PRESENTATION:

S.V. with pilot control for interception of fluids compatible with the construction materials.

A minimum operational pressure of 0,9 bar is required.

The materials used and the tests carried out ensure maximum reliability and duration.

USE: Hot water, Steam

PIPES: 1/2 NPT - 1 NPT

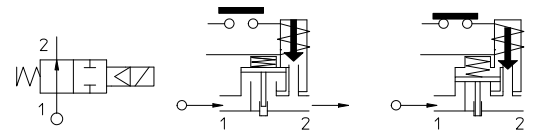
COIL: 8W - Ø 13
BDF - BDV 180°C (class H)

MOULDING AND BOBBIN ARE MADE BY 100% VIRGIN MATERIAL.

Max. allowable pressure (PS) 25 bar
Temperature ambiante: - 40°C + 80°C



Gaskets	Temperature		Medium
	- 40°C	+180°C	
T=PTFE (polytetrafluorethylen)			Steam, hot water



Pipe ANSI/ASME BI.20.1	Code	Max viscosity		Ø mm	Kv l/mn	Power (watt)	Pressure		
		cSt	°E				min bar	M.O.P.D.	
								AC bar	DC bar
1/2 NPT	21YN4Z0T130-YW	-	-	13	50	8	0,9	10	10
3/4 NPT	21YN5Z0T190-YW			19	90				
1 NPT	21YN6Z0T250-YW			25	160				

Note.

Available on request and with minimum quantities.

The "ODE" reserves the right to carry out technical and aesthetic modifications without prior notification.

MATERIALS:

Body	Brass - UNI EN 12165 CW617N
Armature tube	Stainless steel AISI series 300
Fixed core	Stainless steel AISI series 400
Plunger	Stainless steel AISI series 400
Phase displacement ring	Copper - Cu 99,9%
Spring	Stainless steel AISI series 300
Piston seal	Modified PTFE
Main seal	Glassfiber reinforced T=PTFE
Pilot seal	PTFE
Orifice	Brass - UNI EN 12165 CW617N

On request:

Connector	Pg 9 o Pg 11
Connector conformity	ISO 4400

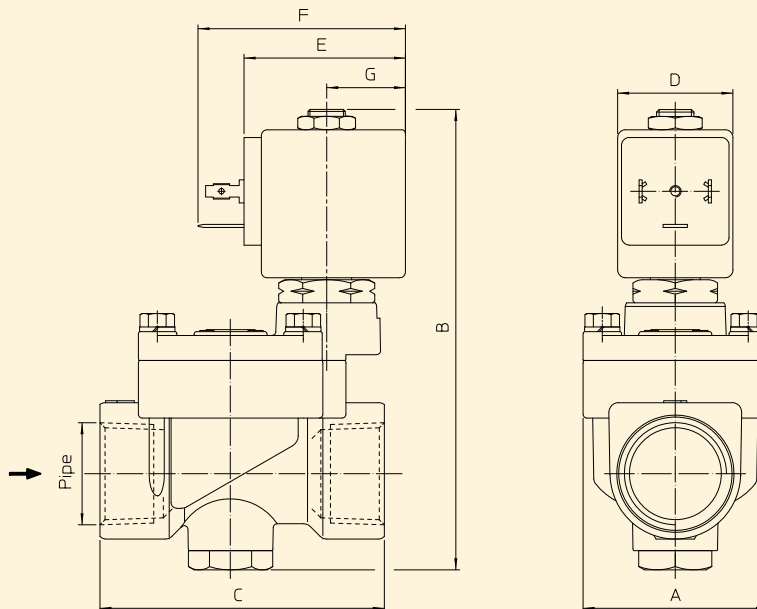
FEATURES:

Electrical conformity	IEC 335
Protection degree	IP 65 EN 60529 (DIN 40050) with coil fitted by connector.

SPARE PARTS:

1. Coil: See coils list	7. Complete piston: NPT 1/2 Code R452604 NPT 3/4 Code R452547 NPT 1 Code R452548
2. Diaphragm support: Code R450790	8. Gasket plug: NPT 1/2 Code R452609 NPT 3/4+ 1 Code R452553
3. Complete armature tube without gasket: Code R450573	
4. Gasket O-Ring: Code 990000/T	KIT: KT130ZT30-TG=2+3+4
5. Sealing ring: NPT 1/2 Code R452607 NPT 3/4 Code R452551 NPT 1 Code R452552	MAINTENANCE KIT: 1/2 NPT KTPYW4Z0T13=2+5+6+7+8 3/4 NPT KTPYW5Z0T19=2+5+6+7+8 1 NPT KTPYW6Z0T25=2+5+6+7+8
6. Gasket cover: NPT 1/2 Code R452608 NPT 3/4+ 1 Code R450858	

DIMENSIONS:



Type	Pipe	A mm	B mm	C mm
21YN4Z0T130-YW	1/2 NPT	40	107	65
21YN5Z0T190-YW	3/4 NPT	48	120	74
21YN6Z0T250-YW	1 NPT	62	130	93

COIL TYPE	POWER ABSORPTION	DIMENSIONS			
	W	D mm	E mm	F mm	G mm
B	8	30	42	54	20,5